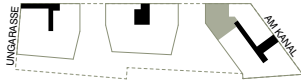
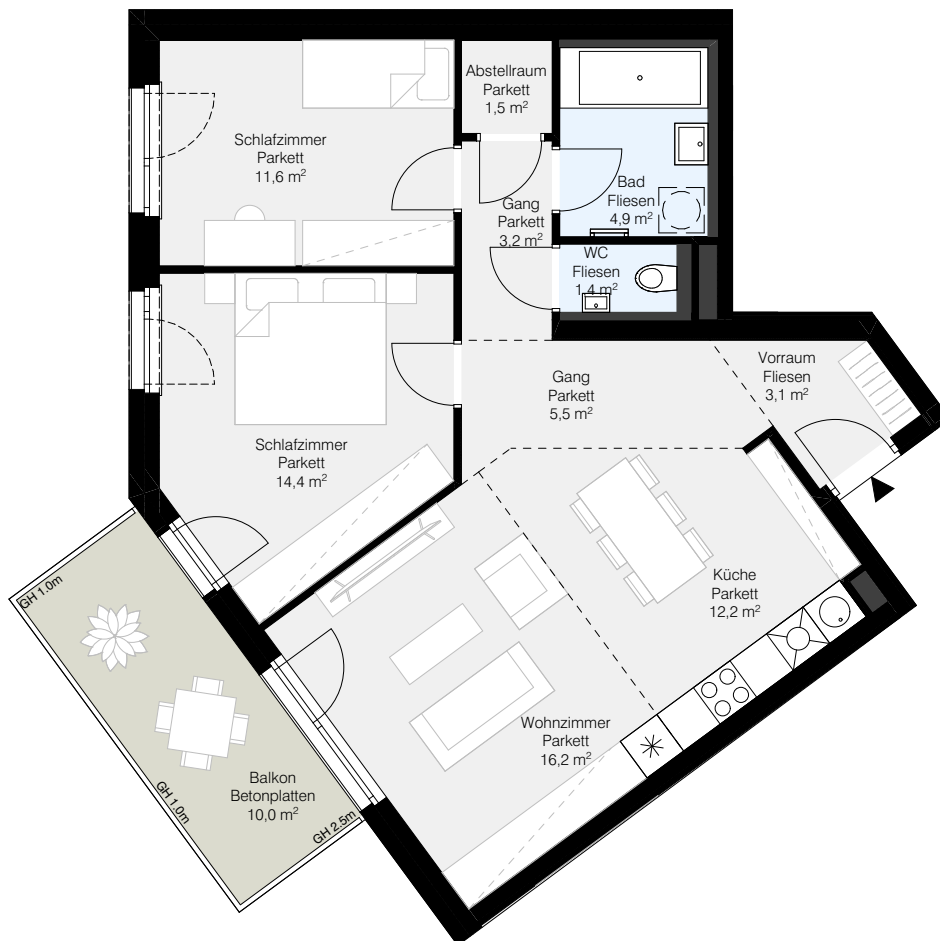


BEILAGE 1



TOP 3.05 (3-Zi Whg)

- Haus 3
- Geschoss 1.OG
- Wohnnutzfläche: 74,0 m<sup>2</sup>
- Balkon: 10,0 m<sup>2</sup>



GH - Geländerhöhe



Kühlschrank



Geschirrspüler



Waschmaschine

